



TRANSPORTATION CABINET

Frankfort, Kentucky 40622
www.transportation.ky.gov/

Steven L. Beshear
Governor

Michael W. Hancock, P.E.
Secretary

July 10, 2012

CALL NO. 102
CONTRACT ID NO. 121022
ADDENDUM # 2

Subject: Franklin County, AIP 3-21-0016-012-2012
Letting July 13, 2012

- (1) Revised - Plan Sheet - G1.02
- (2) Revised - Special Notes - Pages 249-251 of 330
- (3) Revised - Bid Items - Pages 327-330 of 330

Proposal revisions are available at <http://transportation.ky.gov/Construction-Procurement/>.

Plan revisions are available at <http://www.lynnimaging.com/kytransportation/>.

If you have any questions, please contact us at 502-564-3500.

Sincerely,

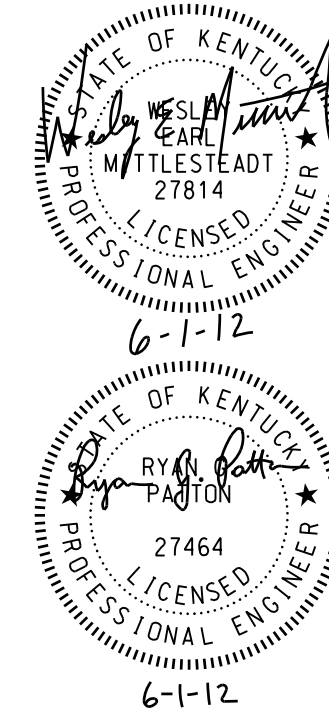
A handwritten signature in blue ink that reads "Ryan Griffith".

Ryan Griffith
Director
Division of Construction Procurement

RG:ks
Enclosures



An Equal Opportunity Employer M/F/D



| SUMMARY OF QUANTITIES | | | | | | |
|-----------------------|-------------|---------------|--|-----------------|--------------------|--------------------|
| No. | ITEM | | Description | Unit Of Measure | Estimated Quantity | Installed Quantity |
| | Spec. | Bid Item Code | | | | |
| 1 | SS-120-3.1 | 40000 | Site Preparation | LS | 1 | |
| 2 | SS-140-5.1 | 40001 | Misc Demo & Disposal | LS | 1 | |
| 3 | SS-300-5.1 | 40003 | Lockout/Tagout & CC Regulator Cal Pro | LS | 1 | |
| 4 | SS-310-5.1 | 40004 | Ex Stk Mtd Edge Light, Removed | EA | 44 | |
| 5 | SS-310-5.2 | 40005 | Ex Base Mtd Edge Light, Removed | EA | 2 | |
| 6 | SS-310-5.3 | 40006 | Ex Base Mtd Sign, Removed | EA | 11 | |
| 7 | SS-310-5.4 | 40007 | Ex REIL Sys (L-849), Removed | EA | 1 | |
| 8 | SS-310-5.5 | 40008 | Base Mtd 1-Mod Sign (L-858), Installed | EA | 1 | |
| 9 | SS-310-5.6 | 40009 | Base Mtd 3-Mod Sign (L-858), Installed | EA | 9 | |
| 11 | SS-310-5.7 | 40010 | Ex Stk Mtd Light (L-861), New Lens Set | EA | 4 | |
| 12 | SS-310-5.8 | 40011 | Stk Mtd Edge Light (L-861), Installed | EA | 6 | |
| 13 | SS-310-5.9 | 40012 | Base Mtd Edge Light (L-861), Installed | EA | 2 | |
| 14 | SS-310-5.10 | 40013 | Stk Mtd T/W Light (L-861T), Installed | EA | 33 | |
| 15 | SS-310-5.11 | 40014 | Base Mtd T/W Light (L-861T), Installed | EA | 4 | |
| 16 | SS-310-5.12 | 40015 | Ex PAPI Sys (L-880), Relocated | EA | 1 | |
| 17 | SS-310-5.13 | 40016 | PAPI Aiming Bar (L-880) | EA | 1 | |
| 18 | SS-310-5.14 | 40017 | Temporary Airfield Lighting | LS | 1 | |
| 19 | D-701-5.1 | 40018 | 18" RCP (Class IV) | LF | 174 | |
| 20 | D-705-5.1 | 40019 | 6 inch Underdrain Pipe | LF | 1,305 | |
| 21 | D-705-5.2 | 40020 | 6 inch Non-Perforated Collector Pipe | LF | 250 | |
| 22 | D-705-5.3 | 40021 | Concrete Outlet Protector | EA | 3 | |
| 23 | D-751-5.1 | 40022 | 4' Sqr Concrete Catch Basin w/ Grate | EA | 1 | |
| 24 | D-752-5.1 | 40023 | 18 inch KYTC S&F Headwall | EA | 1 | |
| 25 | P-101-5.1 | 40024 | Asphalt Pavement Removal (All Depths) | SY | 14,796 | |
| 26 | P-101-5.2 | 40025 | Joint & Crack Repair | LF | 14,385 | |
| 27 | P-152-4.1 | 40026 | Embankment In Place | CY | 40,243 | |
| 28 | P-152-4.2 | 40027 | Rock Excavation | CY | 5,581 | |
| 29 | P-152-4.3 | 40028 | Select Rock Fill Embankment | CY | 4,248 | |
| 30 | P-152-4.4 | 40029 | Unsuitable Excavation | CY | 2,012 | |

| SUMMARY OF QUANTITIES (CONTINUED) | | | | | | |
|-----------------------------------|-----------|---------------|---|-----------------|--------------------|--------------------|
| No. | ITEM | | Description | Unit Of Measure | Estimated Quantity | Installed Quantity |
| | Spec. | Bid Item Code | | | | |
| 31 | P-156-5.1 | 40030 | Temporary Silt Fence | LF | 2,881 | |
| 32 | P-156-5.2 | 40031 | Silt Trap, Type C | EA | 2 | |
| 33 | P-156-5.3 | 40032 | Erosion Control Blanket | SY | 4,720 | |
| 34 | P-156-5.4 | 40033 | Turf Reinforcement Mat (TRM) | SY | 2,370 | |
| 35 | P-156-5.5 | 40034 | Temp Seed, Mulch, and Fertilize | ACRE | 4 | |
| 36 | P-156-5.6 | 40035 | Slope Drains | LS | 1 | |
| 37 | P-156-5.7 | 40036 | Cls II Chan Lining, 18-inches w/ Fabric | TON | 250 | |
| 38 | P-156-5.8 | 40037 | Silt Trap, Type B | EA | 15 | |
| 39 | P-209-5.1 | 40038 | Crushed Aggregate Base Course | TON | 5,907 | |
| 40 | P-401-8.1 | 40039 | Bit Surface Course, 3/4" Max Agg | TON | 1,001 | |
| 41 | P-401-8.2 | 40040 | Bit Base Course, 1 1/2" Max Agg | TON | 1,986 | |
| 42 | P-620-5.1 | 40041 | Temp R/W & T/W Paint, White-Water | SF | 2,990 | |
| 43 | P-620-5.2 | 40042 | Temp R/W & T/W Paint, Yellow-Water | SF | 2,460 | |
| 44 | P-620-5.3 | 40043 | R/W & T/W Paint, White-Water | SF | 31,230 | |
| 45 | P-620-5.4 | 40044 | R/W & T/W Paint, Yellow-Water | SF | 3,070 | |
| 46 | P-620-5.5 | 40045 | Pavement Marking Removal | SF | 39,230 | |
| 47 | P-630-7.1 | 40046 | Refined Coal Tar Emul for Slurry Coat | GAL | 9,642 | |
| 48 | T-901-5.1 | 40002 | Seeding | ACRE | 19 | |
| 49 | T-904-5.1 | 40047 | Sodding | SY | 2,802 | |
| 50 | T-905-5.1 | 40096 | Topsailing, 6" Thick, Obtained On Site | SY | 50,671 | |
| 51 | T-905-5.2 | 40097 | Topsailing, 6" Thick, Obtained Off Site | SY | 25,298 | |
| 52 | L-107-5.1 | 40050 | 8-Ft Supp Wind Cone (L-806), Installed | EA | 1 | |
| 53 | L-107-5.2 | 40051 | 12-Ft Wind Cone (L-807), Installed | EA | 1 | |
| 54 | L-107-5.3 | 40052 | Segmented Circle, Installed | EA | 1 | |
| 55 | L-108-5.1 | 40053 | Cable Trench, 18-inch Min Depth | LF | 5,000 | |
| 56 | L-108-5.2 | 40054 | No. 8 AWG 5kV Cable (L-824C), Installed | LF | 12,000 | |
| 57 | L-108-5.3 | 40055 | No. 6 AWG Counterpoise, Installed | LF | 7,800 | |
| 58 | L-108-5.4 | 40056 | Counterpoise Trench, 18-in Min Depth | LF | 2,800 | |
| 59 | L-108-5.5 | 40057 | No. 6 AWG Strd, 600V, Type XHHW Ground | LF | 4,500 | |

| SUMMARY OF QUANTITIES (CONTINUED) | | | | | | |
|-----------------------------------|-----------|---------------|---|-----------------|--------------------|--------------------|
| No. | ITEM | | Description | Unit Of Measure | Estimated Quantity | Installed Quantity |
| | Spec. | Bid Item Code | | | | |
| 60 | L-108-5.6 | 40058 | No. 22 AWG 25-Pair Comm Wire, Installed | LF | 2,500 | |
| 61 | L-108-5.7 | 40059 | No. 22 AWG 100-Pair Comm Wire, Installed | LF | 2,500 | |
| 62 | L-110-5.1 | 40060 | Concrete Encased Elec Cond 1-Way, 2"C | LF | 120 | |
| 63 | L-110-5.2 | 40061 | Concrete Encased Elec Cond 2-Way, 2"C | LF | 75 | |
| 64 | L-110-5.3 | 40062 | Non-Encased Elec Cond, 1-Way, 2"C | LF | 2,500 | |
| 65 | L-115-5.1 | 40063 | Elec Jct Strc Cls 1 (L-867) 16"x24", Inst | EA | 2 | |
| 66 | L-115-5.2 | 40064 | Remove Ex Elec Jct Structure | EA | 1 | |
| 67 | L-115-5.3 | 40065 | Conc Elec Handhole, H20 Rated, Installed | EA | 2 | |

NOTE

1. ITEM DESCRIPTIONS SHOWN ON THIS SHEET HAVE BEEN ABBREVIATED. REFERENCE INDIVIDUAL SPECIFICATIONS FOR FULL DESCRIPTION OF ITEMS.

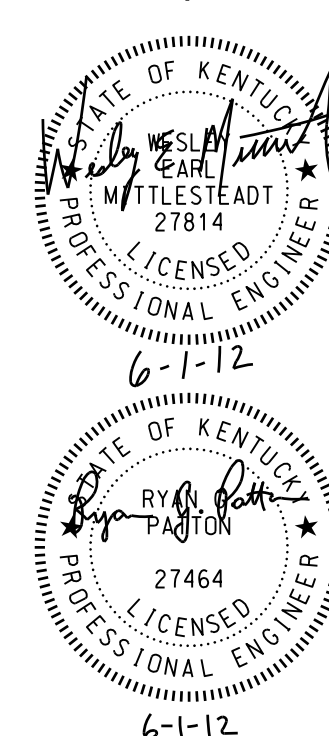
| REV | DATE | DESCRIPTION | BY |
|-----|------------|--|-----|
| 1 | 06.07.2012 | REMOVED QUANTITIES FOR ADD. DESCRIPTION ABBREVIATIONS | WEM |
| 2 | 07.10.2012 | VIA APPENDUM NO. 1, MODIFIED DESCRIPTIONS OF PAY ITEMS 50 & 51 | WEM |

CAPITAL CITY AIRPORT
FRANKFORT, KENTUCKY
RSA IMPROVEMENT PROJECT
FAA AIP PROJECT NO. 3-21-0016-012-2012

SUMMARY OF QUANTITIES

Job No.: 11061070
Date: 06.01.2012
Drawn by: NHM
Designed by: WEM

Sheet Number
G1.02
ISSUED FOR BID



| SUMMARY OF QUANTITIES | | | | | | |
|-----------------------|-------------|---------------|--|-----------------|--------------------|--------------------|
| No. | ITEM | | Description | Unit Of Measure | Estimated Quantity | Installed Quantity |
| | Spec. | Bid Item Code | | | | |
| 1 | SS-120-3.1 | 40000 | Site Preparation | LS | 1 | |
| 2 | SS-140-5.1 | 40001 | Misc Demo & Disposal | LS | 1 | |
| 3 | SS-300-5.1 | 40003 | Lockout/Tagout & CC Regulator Cal Pro | LS | 1 | |
| 4 | SS-310-5.1 | 40004 | Ex Stk Mtd Edge Light, Removed | EA | 44 | |
| 5 | SS-310-5.2 | 40005 | Ex Base Mtd Edge Light, Removed | EA | 2 | |
| 6 | SS-310-5.3 | 40006 | Ex Base Mtd Sign, Removed | EA | 11 | |
| 7 | SS-310-5.4 | 40007 | Ex REIL Sys (L-849), Removed | EA | 1 | |
| 8 | SS-310-5.5 | 40008 | Base Mtd 1-Mod Sign (L-858), Installed | EA | 1 | |
| 9 | SS-310-5.6 | 40009 | Base Mtd 3-Mod Sign (L-858), Installed | EA | 9 | |
| 11 | SS-310-5.7 | 40010 | Ex Stk Mtd Light (L-861), New Lens Set | EA | 4 | |
| 12 | SS-310-5.8 | 40011 | Stk Mtd Edge Light (L-861), Installed | EA | 6 | |
| 13 | SS-310-5.9 | 40012 | Base Mtd Edge Light (L-861), Installed | EA | 2 | |
| 14 | SS-310-5.10 | 40013 | Stk Mtd T/W Light (L-861T), Installed | EA | 33 | |
| 15 | SS-310-5.11 | 40014 | Base Mtd T/W Light (L-861T), Installed | EA | 4 | |
| 16 | SS-310-5.12 | 40015 | Ex PAPI Sys (L-880), Relocated | EA | 1 | |
| 17 | SS-310-5.13 | 40016 | PAPI Aiming Bar (L-880) | EA | 1 | |
| 18 | SS-310-5.14 | 40017 | Temporary Airfield Lighting | LS | 1 | |
| 19 | D-701-5.1 | 40018 | 18" RCP (Class IV) | LF | 174 | |
| 20 | D-705-5.1 | 40019 | 6 inch Underdrain Pipe | LF | 1,305 | |
| 21 | D-705-5.2 | 40020 | 6 inch Non-Perforated Collector Pipe | LF | 250 | |
| 22 | D-705-5.3 | 40021 | Concrete Outlet Protector | EA | 3 | |
| 23 | D-751-5.1 | 40022 | 4' Sqr Concrete Catch Basin w/ Grate | EA | 1 | |
| 24 | D-752-5.1 | 40023 | 18 inch KYTC S&F Headwall | EA | 1 | |
| 25 | P-101-5.1 | 40024 | Asphalt Pavement Removal (All Depths) | SY | 14,796 | |
| 26 | P-101-5.2 | 40025 | Joint & Crack Repair | LF | 14,385 | |
| 27 | P-152-4.1 | 40026 | Embankment In Place | CY | 40,243 | |
| 28 | P-152-4.2 | 40027 | Rock Excavation | CY | 5,581 | |
| 29 | P-152-4.3 | 40028 | Select Rock Fill Embankment | CY | 4,248 | |
| 30 | P-152-4.4 | 40029 | Unsuitable Excavation | CY | 2,012 | |

| SUMMARY OF QUANTITIES (CONTINUED) | | | | | | |
|-----------------------------------|-----------|---------------|---|-----------------|--------------------|--------------------|
| No. | ITEM | | Description | Unit Of Measure | Estimated Quantity | Installed Quantity |
| | Spec. | Bid Item Code | | | | |
| 31 | P-156-5.1 | 40030 | Temporary Silt Fence | LF | 2,881 | |
| 32 | P-156-5.2 | 40031 | Silt Trap, Type C | EA | 2 | |
| 33 | P-156-5.3 | 40032 | Erosion Control Blanket | SY | 4,720 | |
| 34 | P-156-5.4 | 40033 | Turf Reinforcement Mat (TRM) | SY | 2,370 | |
| 35 | P-156-5.5 | 40034 | Temp Seed, Mulch, and Fertilize | ACRE | 4 | |
| 36 | P-156-5.6 | 40035 | Slope Drains | LS | 1 | |
| 37 | P-156-5.7 | 40036 | Cls II Chan Lining, 18-inches w/ Fabric | TON | 250 | |
| 38 | P-156-5.8 | 40037 | Silt Trap, Type B | EA | 15 | |
| 39 | P-209-5.1 | 40038 | Crushed Aggregate Base Course | TON | 5,907 | |
| 40 | P-401-8.1 | 40039 | Bit Surface Course, 3/4" Max Agg | TON | 1,001 | |
| 41 | P-401-8.2 | 40040 | Bit Base Course, 1 1/2" Max Agg | TON | 1,986 | |
| 42 | P-620-5.1 | 40041 | Temp R/W & T/W Paint, White-Water | SF | 2,990 | |
| 43 | P-620-5.2 | 40042 | Temp R/W & T/W Paint, Yellow-Water | SF | 2,460 | |
| 44 | P-620-5.3 | 40043 | R/W & T/W Paint, White-Water | SF | 31,230 | |
| 45 | P-620-5.4 | 40044 | R/W & T/W Paint, Yellow-Water | SF | 3,070 | |
| 46 | P-620-5.5 | 40045 | Pavement Marking Removal | SF | 39,230 | |
| 47 | P-630-7.1 | 40046 | Refined Coal Tar Emul for Slurry Coat | GAL | 9,642 | |
| 48 | T-901-5.1 | 40002 | Seeding | ACRE | 19 | |
| 49 | T-904-5.1 | 40047 | Sodding | SY | 2,802 | |
| 50 | T-905-5.1 | 40096 | Topsailing, 6" Thick, Obtained On Site | SY | 50,671 | |
| 51 | T-905-5.2 | 40097 | Topsailing, 6" Thick, Obtained Off Site | SY | 25,298 | |
| 52 | L-107-5.1 | 40050 | 8-Ft Supp Wind Cone (L-806), Installed | EA | 1 | |
| 53 | L-107-5.2 | 40051 | 12-Ft Wind Cone (L-807), Installed | EA | 1 | |
| 54 | L-107-5.3 | 40052 | Segmented Circle, Installed | EA | 1 | |
| 55 | L-108-5.1 | 40053 | Cable Trench, 18-inch Min Depth | LF | 5,000 | |
| 56 | L-108-5.2 | 40054 | No. 8 AWG 5kV Cable (L-824C), Installed | LF | 12,000 | |
| 57 | L-108-5.3 | 40055 | No. 6 AWG Counterpoise, Installed | LF | 7,800 | |
| 58 | L-108-5.4 | 40056 | Counterpoise Trench, 18-in Min Depth | LF | 2,800 | |
| 59 | L-108-5.5 | 40057 | No. 6 AWG Strd, 600V, Type XHHW Ground | LF | 4,500 | |

| SUMMARY OF QUANTITIES (CONTINUED) | | | | | | |
|-----------------------------------|-----------|---------------|---|-----------------|--------------------|--------------------|
| No. | ITEM | | Description | Unit Of Measure | Estimated Quantity | Installed Quantity |
| | Spec. | Bid Item Code | | | | |
| 60 | L-108-5.6 | 40058 | No. 22 AWG 25-Pair Comm Wire, Installed | LF | 2,500 | |
| 61 | L-108-5.7 | 40059 | No. 22 AWG 100-Pair Comm Wire, Installed | LF | 2,500 | |
| 62 | L-110-5.1 | 40060 | Concrete Encased Elec Cond 1-Way, 2"C | LF | 120 | |
| 63 | L-110-5.2 | 40061 | Concrete Encased Elec Cond 2-Way, 2"C | LF | 75 | |
| 64 | L-110-5.3 | 40062 | Non-Encased Elec Cond, 1-Way, 2"C | LF | 2,500 | |
| 65 | L-115-5.1 | 40063 | Elec Jct Strc Cls 1 (L-867) 16"x24", Inst | EA | 2 | |
| 66 | L-115-5.2 | 40064 | Remove Ex Elec Jct Structure | EA | 1 | |
| 67 | L-115-5.3 | 40065 | Conc Elec Handhole, H20 Rated, Installed | EA | 2 | |

NOTE

1. ITEM DESCRIPTIONS SHOWN ON THIS SHEET HAVE BEEN ABBREVIATED. REFERENCE INDIVIDUAL SPECIFICATIONS FOR FULL DESCRIPTION OF ITEMS.

| REV | DATE | DESCRIPTION | BY |
|-----|------------|--|-----|
| 1 | 06.07.2012 | REMOVED QUANTITIES FOR ADD. DESCRIPTION ABBREVIATIONS | WEM |
| 2 | 07.10.2012 | VIA APPENDUM NO. 1, MODIFIED DESCRIPTIONS OF PAY ITEMS 50 & 51 | WEM |

CAPITAL CITY AIRPORT
FRANKFORT, KENTUCKY
RSA IMPROVEMENT PROJECT
FAA AIP PROJECT NO. 3-21-0016-012-2012

SUMMARY OF QUANTITIES

Job No.: 11061070
Date: 06.01.2012
Drawn by: NHM
Designed by: WEM

Sheet Number
G1.02
ISSUED FOR BID

ITEM T-905 TOPSOILING

DESCRIPTION

905-1.1 This item shall consist of preparing the ground surface for topsoil application, removing topsoil from designated stockpiles or areas to be stripped on the site or from approved sources off the site, and placing and spreading the topsoil on prepared areas in accordance with this specification at the locations shown on the plans or as directed by the Engineer.

MATERIALS

905-2.1 TOPSOIL. Topsoil shall be the surface layer of soil with no admixture of refuse or any material toxic to plant growth, and it shall be reasonably free from subsoil and stumps, roots, brush, stones (2 inches or more in diameter), and clay lumps or similar objects. Brush and other vegetation that will not be incorporated with the soil during handling operations shall be cut and removed. Ordinary sods and herbaceous growth such as grass and weeds are not to be removed but shall be thoroughly broken up and intermixed with the soil during handling operations. The topsoil or soil mixture, unless otherwise specified or approved, shall have a pH range of approximately 5.5 pH to 7.6 pH, when tested in accordance with the methods of testing of the association of official agricultural chemists in effect on the date of invitation of bids. The organic content shall be not less than 3% nor more than 20% as determined by the wet-combustion method (chromic acid reduction). There shall be not less than 20% nor more than 80% of the material passing the 200 mesh (0.075 mm) sieve as determined by the wash test in accordance with ASTM C 117. *Topsoil testing shall be completed and paid for by the Contractor.*

Natural topsoil may be amended by the Contractor with approved materials and methods to meet the above specifications.

905-2.2 INSPECTION AND TESTS. Within 10 days following acceptance of the bid, the Engineer shall be notified of the source of topsoil to be furnished by the Contractor. The topsoil shall be inspected to determine if the selected soil meets the requirements specified and to determine the depth to which stripping will be permitted. At this time, the Contractor may be required to take representative soil samples from several locations within the area under consideration and to the proposed stripping depths, for testing purposes as specified in 905-2.1.

CONSTRUCTION METHODS

905-3.1 GENERAL. Areas to be topsoiled shall be shown on the plans. If topsoil is available on the site, the location of the stockpiles or areas to be stripped of topsoil and the stripping depths shall be shown on the plans *or shown in the geotechnical report.*

Suitable equipment necessary for proper preparation and treatment of the ground surface, stripping of topsoil, and for the handling and placing of all required materials shall be on hand, in good condition, and approved by the Engineer before the various operations are started.

905-3.2 PREPARING THE GROUND SURFACE. Immediately prior to dumping and spreading the topsoil on any area, the surface shall be loosened by discs or spike-tooth harrows, or by other means approved by the Engineer, to a minimum depth of 2 inches (50 mm) to facilitate bonding of the topsoil to the covered subgrade soil. The surface of the area to be topsoiled shall be cleared of all stones larger than 2 inches (50 mm) in any diameter and all litter or other material which may be detrimental to proper bonding, the rise of capillary moisture, or the proper growth of the desired planting. Limited areas, as shown on the plans, which are too compact to respond to these operations shall receive special scarification.

Grades on the area to be topsoiled, which have been established by others as shown on the plans, shall be maintained in a true and even condition. Where grades have not been established, the areas shall be smooth-graded and the surface left at the prescribed grades in an even and properly compacted condition to prevent, insofar as practical, the formation of low places or pockets where water will stand.

905-3.3 OBTAINING TOPSOIL. Prior to the stripping of topsoil from designated areas, any vegetation, briars, stumps and large roots, rubbish or stones found on such areas, which may interfere with subsequent operations, shall be removed using methods approved by the Engineer. Heavy sod or other cover, which cannot be incorporated into the topsoil by discing or other means shall be removed.

When suitable topsoil is available on the site, the Contractor shall remove this material from the designated areas and to the depth as directed by the Engineer. The topsoil shall be spread on areas already tilled and smooth-graded, or stockpiled in areas approved by the Engineer. Any topsoil stockpiled by the Contractor shall be rehandled and placed without additional compensation. Any topsoil that has been stockpiled on the site by others, and is required for topsoiling purposes, shall be removed and placed by the Contractor. The sites of all stockpiles and areas adjacent thereto which have been disturbed by the Contractor shall be graded if required and put into a condition acceptable for seeding.

When suitable topsoil is secured off the airport site, the Contractor shall locate and obtain the supply, subject to the approval of the Engineer. The Contractor shall notify the Engineer sufficiently in advance of operations in order that necessary measurements and tests can be made. The Contractor shall remove the topsoil from approved areas and to the depth as directed. The topsoil shall be hauled to the site of the work and placed for spreading, or spread as required. Any topsoil hauled to the site of the work and stockpiled shall be rehandled and placed without additional compensation.

905-3.4 PLACING TOPSOIL. The topsoil shall be evenly spread on the prepared areas to a uniform depth of ~~2 inches (50 mm)~~ **6 inches** after compaction, unless otherwise shown on the plans or stated in the special provisions. Spreading shall not be done when the ground or topsoil is frozen, excessively wet, or otherwise in a condition detrimental to the work. Spreading shall be carried on so that turfing operations can proceed with a minimum of soil preparation or tilling.

After spreading, any large, stiff clods and hard lumps shall be broken with a pulverizer or by other effective means, and all stones or rocks (2 inches (50 mm) or more in diameter), roots, litter, or any foreign matter shall be raked up and disposed of by the Contractor. After spreading is completed, the topsoil shall be satisfactorily compacted by rolling with a cultipacker or by other means approved by the Engineer. The compacted topsoil surface shall conform to the required lines, grades, and cross sections. Any topsoil or other dirt falling upon pavements as a result of hauling or handling of topsoil shall be promptly removed.

METHOD OF MEASUREMENT

905-4.1 Topsoil obtained on the site shall be measured by the *area in square yards of the specified thickness of topsoil rehandled and placed from the topsoil stockpiled under Item P-152-2.10 as accepted by the Engineer. Topsoiling measured for payment shall only be within the planned limits of construction.* ~~number of cubic yards (cubic meters) of topsoil measured in its original position and stripped or excavated. Topsoil stockpiled by others and removed for topsoiling by the Contractor shall be measured by the number of cubic yards (cubic meters) of topsoil measured in the stockpile. Topsoil shall be measured by volume in cubic yards (cubic meters) computed by the method of end areas.~~

905-4.2 ~~Topsoil obtained off the site shall be measured by the number of cubic yards (cubic meters) of topsoil measured in its original position and stripped or excavated. Topsoil shall be measured by volume in cubic yards (meters) computed by the method of end areas.~~

905-4.2 *Topsoil obtained off the site shall be measured by the area in square yards of the specified thickness of topsoil placed as accepted by the Engineer. Topsoiling measured for payment shall only be within the planned limits of construction.*

BASIS OF PAYMENT

905-5.1 Payment will be made at the contract unit price per ~~cubic yard (cubic meter)~~ *square yard of the specified thickness* for topsoiling (obtained on the site). This price shall be full compensation for furnishing all materials and for all preparation, placing, and spreading of the materials, and for all labor, equipment, tools, and incidentals necessary to complete the item.

~~**905-5.2** Payment will be made at the contract unit price per cubic yard (cubic meter) for topsoiling (obtained off the site). This price shall be full compensation for furnishing all materials and for all preparation, placing, and spreading of the materials, and for all labor, equipment, tools, and incidentals necessary to complete the item.~~

905-5.2 *Payment will be made at the contract unit price per square yard of the specified thickness for topsoiling (obtained off the site). This price shall be full compensation for furnishing all materials and for all preparation, placing, and spreading of the materials, and for all labor, equipment, tools, and incidentals necessary to complete the item.*

Payment will be made under:

Item T-905-5.1 Topsoiling (Obtained on Site or Removed from Stockpile; 6" Thickness)
—per ~~cubic square~~ yard (~~cubic meter~~)

Item T-905-5.2 Topsoiling (Furnished from Off the Site; 6" Thickness)—per ~~cubic square~~ yard (~~cubic meter~~)

TESTING MATERIALS

ASTM C 117 Materials Finer than 75- μ m (No. 200) Sieve in Mineral Aggregates by Washing

END OF ITEM T-905

KENTUCKY TRANSPORTATION CABINET
 DEPARTMENT OF HIGHWAYS
 FRANKFORT, KY 40622

CONTRACT ID: 121022
 COUNTY: FRANKLIN
 PROPOSAL: AIP 3-21-0016-012-2012

PAGE: 1
 LETTING: 07/13/12
 CALL NO: 102

| LINE NO | ITEM | DESCRIPTION | APPROXIMATE QUANTITY | UNIT | UNIT PRICE | AMOUNT |
|---|-------|---|----------------------|------|------------|--------|
| ----- | | | | | | |
| SECTION 0001 RUNWAY SAFETY IMPROVEMENTS | | | | | | |
| ----- | | | | | | |
| 0010 | 40000 | SITE PREPARATION | (1.00) | LS | | |
| ----- | | | | | | |
| 0020 | 40001 | MISC DEMO AND DISPOSAL | (1.00) | LS | | |
| ----- | | | | | | |
| 0030 | 40002 | SEEDING | 19.000 | ACRE | | |
| ----- | | | | | | |
| 0040 | 40003 | LOCKOUT-TAGOUT AND CC REGULATOR CAL PRO | (1.00) | LS | | |
| ----- | | | | | | |
| 0050 | 40004 | EX STK MTD EDGE LIGHT-REMOVED | 44.000 | EACH | | |
| ----- | | | | | | |
| 0060 | 40005 | EX BASE MTD EDGE LIGHT-REMOVED | 2.000 | EACH | | |
| ----- | | | | | | |
| 0070 | 40006 | EX BASE MTD SIGN-REMOVED | 11.000 | EACH | | |
| ----- | | | | | | |
| 0080 | 40007 | EX REIL SYS L-849-REMOVED | 1.000 | EACH | | |
| ----- | | | | | | |
| 0090 | 40008 | BASE MTD 1-MOD SIGN L-858-INSTALLED | 1.000 | EACH | | |
| ----- | | | | | | |
| 0100 | 40009 | BASE MTD 3-MOD SIGN L-858-INSTALLED | 9.000 | EACH | | |
| ----- | | | | | | |
| 0110 | 40010 | EX STK MTD LIGHT L-861-NEW LENS SET | 4.000 | EACH | | |
| ----- | | | | | | |
| 0120 | 40011 | STK MTD EDGE LIGHT L-861-INSTALLED | 6.000 | EACH | | |
| ----- | | | | | | |
| 0130 | 40012 | BASE MTD EDGE LIGHT L-861-INSTALLED | 2.000 | EACH | | |
| ----- | | | | | | |
| 0140 | 40013 | STK MTD T/W LIGHT L-861T-INSTALLED | 33.000 | EACH | | |
| ----- | | | | | | |
| 0150 | 40014 | BASE MTD T/W LIGHT L-861T-INSTALLED | 4.000 | EACH | | |
| ----- | | | | | | |
| 0160 | 40015 | EX PAPI SYS L-880-RELOCATED | 1.000 | EACH | | |
| ----- | | | | | | |
| 0170 | 40016 | PAPI AIMING BAR L-880 | 1.000 | EACH | | |
| ----- | | | | | | |
| 0180 | 40017 | TEMPORARY AIRFIELD LIGHTING | (1.00) | LS | | |
| ----- | | | | | | |
| 0190 | 40018 | RCP-18 IN(CLASS IV) | 174.000 | LF | | |
| ----- | | | | | | |
| 0200 | 40019 | UNDERDRAIN PIPE-6 IN | 1,305.000 | LF | | |
| ----- | | | | | | |

KENTUCKY TRANSPORTATION CABINET
 DEPARTMENT OF HIGHWAYS
 FRANKFORT, KY 40622

CONTRACT ID: 121022
 COUNTY: FRANKLIN
 PROPOSAL: AIP 3-21-0016-012-2012

PAGE: 2
 LETTING: 07/13/12
 CALL NO: 102

| LINE NO | ITEM | DESCRIPTION | APPROXIMATE QUANTITY | UNIT | UNIT PRICE | AMOUNT |
|---------|-------|---------------------------------------|----------------------|------|------------|--------|
| 0210 | 40020 | NON-PERF COLLECTOR PIPE-6 IN | 250.000 | LF | | |
| 0220 | 40021 | CONCRETE OUTLET PROTECTOR | 3.000 | EACH | | |
| 0230 | 40022 | CONCRETE CATCH BASIN W/GRATE-4 FT SQR | 1.000 | EACH | | |
| 0240 | 40023 | KYTC S&F HEADWALL-18 IN | 1.000 | EACH | | |
| 0250 | 40024 | ASPHALT PAVEMENT REMOVAL(ALL DEPTHS) | 14,796.000 | SQYD | | |
| 0260 | 40025 | JOINT AND CRACK REPAIR | 14,385.000 | LF | | |
| 0270 | 40026 | EMBANKMENT IN PLACE | 40,243.000 | CUYD | | |
| 0280 | 40027 | ROCK EXCAVATION | 5,581.000 | CUYD | | |
| 0290 | 40028 | SELECT ROCK FILL EMBANKMENT | 4,248.000 | CUYD | | |
| 0300 | 40029 | UNSUITABLE EXCAVATION | 2,012.000 | CUYD | | |
| 0310 | 40030 | TEMPORARY SILT FENCE | 2,881.000 | LF | | |
| 0320 | 40031 | SILT TRAP TYPE C | 2.000 | EACH | | |
| 0330 | 40032 | EROSION CONTROL BLANKET | 4,720.000 | SQYD | | |
| 0340 | 40033 | TURF REINFORCEMENT MAT | 2,370.000 | SQYD | | |
| 0350 | 40034 | TEMP SEED-MULCH AND FERTILIZE | 4.000 | ACRE | | |
| 0360 | 40035 | SLOPE DRAINS | (1.00) | LS | | |
| 0370 | 40036 | CLASS II CHAN LINING-18 IN W/FABRIC | 250.000 | TON | | |
| 0380 | 40037 | SILT TRAP TYPE B | 15.000 | EACH | | |
| 0390 | 40038 | CRUSHED AGG BASE COURSE | 5,907.000 | TON | | |
| 0400 | 40039 | BIT SURFACE COURSE-3/4 IN MAX AGG | 1,001.000 | TON | | |
| 0410 | 40040 | BIT BASE COURSE-1 1/2 IN MAX AGG | 1,986.000 | TON | | |

KENTUCKY TRANSPORTATION CABINET
DEPARTMENT OF HIGHWAYS
FRANKFORT, KY 40622

CONTRACT ID: 121022
COUNTY: FRANKLIN
PROPOSAL: AIP 3-21-0016-012-2012

PAGE: 3
LETTING: 07/13/12
CALL NO: 102

| LINE NO | ITEM | DESCRIPTION | APPROXIMATE QUANTITY | UNIT | UNIT PRICE | AMOUNT |
|---------|-------|---|----------------------|------|------------|--------|
| 0420 | 40041 | TEMP R/W AND T/W PAINT-WHITE WATERBORNE | 2,990.000 | SQFT | | |
| 0430 | 40042 | TEMP R/W & T/W PAINT-YELLOW WATERBORNE | 2,460.000 | SQFT | | |
| 0440 | 40043 | R/W & T/W PAINT-WHITE WATERBORNE | 31,230.000 | SQFT | | |
| 0450 | 40044 | R/W & T/W PAINT-YELLOW WATERBORNE | 3,070.000 | SQFT | | |
| 0460 | 40045 | PAVEMENT MARKING REMOVAL | 39,230.000 | SQFT | | |
| 0470 | 40046 | REFINED COAL TAR EMUL FOR SLURRY COAT | 9,642.000 | GAL | | |
| 0480 | 40047 | SODDING | 2,802.000 | SQYD | | |
| 0490 | 40096 | TOPSOILING-6 IN THICK OBTAINED ON SITE REVISED: 7-10-12 | 50,671.000 | SQYD | | |
| 0500 | 40097 | TOPSOILING-6 IN THICK OBTAINED OFF SITE REVISED: 7-10-12 | 25,298.000 | SQYD | | |
| 0510 | 40050 | SUPP WIND CONE L-806-8 FT-INSTALLED | 1.000 | EACH | | |
| 0520 | 40051 | WIND CONE L-807-12 FT-INSTALLED | 1.000 | EACH | | |
| 0530 | 40052 | SEGMENTED CIRCLE-INSTALLED | 1.000 | EACH | | |
| 0540 | 40053 | CABLE TRENCH-18 IN MIN DEPTH | 5,000.000 | LF | | |
| 0550 | 40054 | AWG 5KV CABLE NO.8 L824C-INSTALLED | 12,000.000 | LF | | |
| 0560 | 40055 | AWG COUNTERPOISE NO.6-INSTALLED | 7,800.000 | LF | | |
| 0570 | 40056 | COUNTERPOISE TRENCH-18 IN MIN DEPTH | 2,800.000 | LF | | |
| 0580 | 40057 | AWG STRD NO.6 600V-TY XHHW GROUND | 4,500.000 | LF | | |
| 0590 | 40058 | AWG 25 NO.22-PAIR COMM WIRE-INSTALLED | 2,500.000 | LF | | |
| 0600 | 40059 | AWG 100 NO.22-PAIR COMM WIRE-INSTALLED | 2,500.000 | LF | | |
| 0610 | 40060 | CONC ENCASED ELC COND 1-WAY-2 IN C | 120.000 | LF | | |
| 0620 | 40061 | CONC ENCASED ELC COND 2-WAY-2 IN C | 75.000 | LF | | |

KENTUCKY TRANSPORTATION CABINET
 DEPARTMENT OF HIGHWAYS
 FRANKFORT, KY 40622

CONTRACT ID: 121022
 COUNTY: FRANKLIN
 PROPOSAL: AIP 3-21-0016-012-2012

PAGE: 4
 LETTING: 07/13/12
 CALL NO: 102

| LINE NO | ITEM | DESCRIPTION | APPROXIMATE UNIT QUANTITY | UNIT PRICE | AMOUNT |
|---------|-------|--|---------------------------|------------|--------|
| 0630 | 40062 | NON-ENCASED ELEC COND-1-WAY-2 IN C | 2,500.000 LF | | |
| 0640 | 40063 | ELEC JCT STRC CLS 1 L-867-16 X 24 IN-INS | 2.000 EACH | | |
| 0650 | 40064 | REMOVE EXIST ELEC JCT STRUCTURE | 1.000 EACH | | |
| 0660 | 40065 | CONC ELEC HANDHOLE-H-20 RATED-INSTALLED | 2.000 EACH | | |
| | | TOTAL BID | | | |